



Vertaxis Futuretech Pvt. Ltd.

India's Leading Industrial LED Display Manufacturer.

ISO 9001 : 2015 Certified

www.vertaxis.in

Vertaxis Futuretech Pvt. Ltd. Is leading technology solutions provider company established in 2017 by a group of qualified technocrats with a prime objective of providing quality customized embedded solutions. We deliver innovative, customer specific, flexible solutions to our clients to operate their businesses more efficiently. With headquarter based at Pune, Maharashtra, India, we have spread our wings across pan India and globally with more than 1100 plus successful installations and 450 plus satisfied clients. With state of art manufacturing & testing facilities equipped in 5000 sq. Feet area, we have been able to provide reliable products and solutions blended with hi-end technology and ensuring value for money. Our products & solutions combine the most reliable and cost-effective technologies with easy installations & integration. We have a team of energetic and dedicated young professionals with up to date knowledge in their domains along with enriched years of experience. It allows us timely delivery of reliable, premium quality and cost-effective products.

USP Of Our Company

- Diverse Skill Sets on various Technologies (Ability to Hack anything Technical)
- Rich experience in the field of Embedded Systems and LED Displays manufacturing
- Fully equipped 5000 square feet shop floor ready for mass production.
- Excellent and prompt after sales support

VERTAXIS AT A GLANCE

3200

Plus Led Displays
Installed Across
All Over India.

180

Plus LED Displays
Installed Globally
Outside India.

1100

Plus Installation
Locations Across
All Over India.

450

Plus Satisfied
Clients.

10

Plus Countries
Globally Where
Vertaxis Displays
Installed.

75

Plus Person-
years Of
Experience.

OUR GLOBAL PRESENCE



We Have Installations Across Pan India And Globally

SOME OF THE WELL KNOWN BRANDS WHO TRUST US.



And Many More...



Industrial Led Display



Transport Led Display



Smart City Led Display



Sports Led Display

Industrial Displays

- SPCB & CPCB Consent Parameter Displays
- AAQMS & AQI Displays
- Process Parameter Displays
- Safety Statistics Displays
- Jumbo LED Displays
- ANDON Displays & ANDON Systems
- IoT Ready Displays
- GPS & NTP Synchronized Clocks

Transport Displays

- Bus Destination Boards
- Train Destination Boards
- Bus Stops / Bus Terminal Display
- PIS Display For Train Platforms
- LED Displays For Airports

Smart City Displays

- Variable Message Signs(VMS/VMD)
- Toll Plaza Displays
- Parking Plaza Displays
- RADAR Vehicle Speed Displays

Sports Displays

- LED Multicolour Multisport Scoreboards
- LED Cricket Scoreboards
- LED Football / Basketball / Volleyball Scoreboards
- LED Boxing Scoreboards
- LED Hockey Scoreboards

Process Parameter Displays



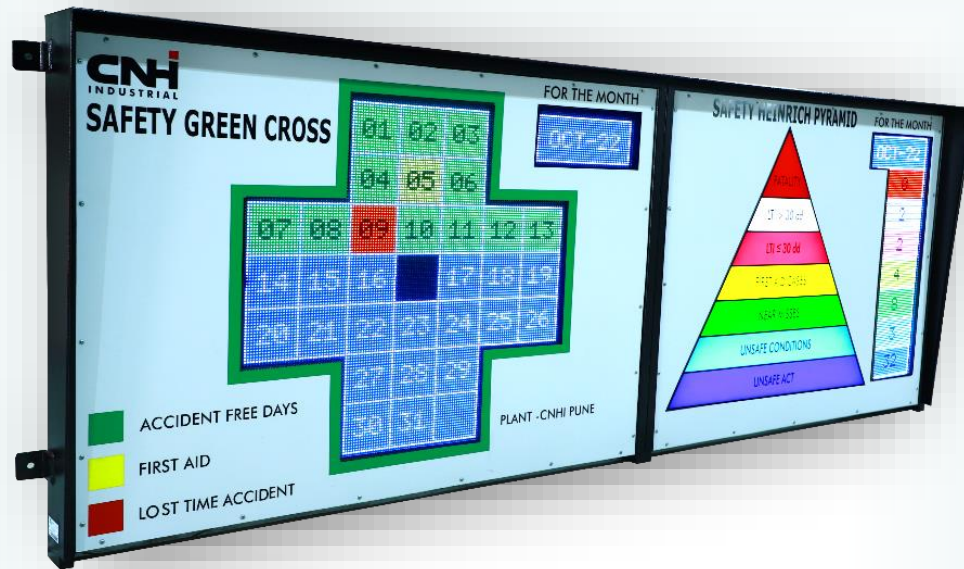
Size - 2800mm x 2100mm x 300mm
Data Input - PLC
Communication - MODBUS RTU

Andon Displays



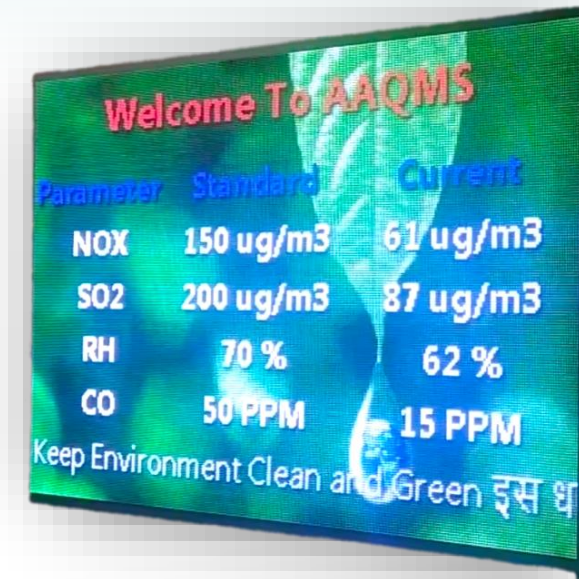
Size - 1900mm x 1300mm x 120mm
Data Input - PLC
Communication - Ethernet

Safety LED Display



Size - 2800mm x 2100mm x 300mm
Data Input - PLC
Communication - MODBUS RTU

AAQMS LED Display



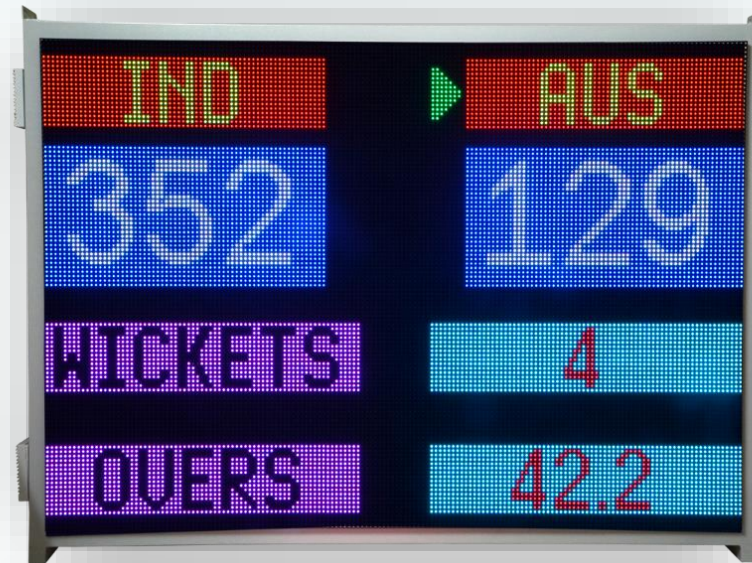
Size - 1900mm x 1300mm x 120mm
Data Input - PLC
Communication - Ethernet

Jumbo Football Scoreboard



Size - 6400mm x 3200mm x 125mm
Data Input - PC Software
Communication - Wired / Wireless

Full Screen Cricket Scoreboard



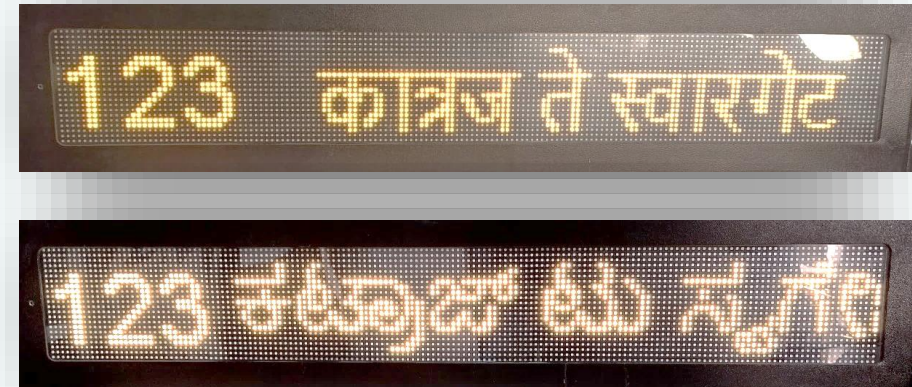
Approx Size - 1660mm x 1180mm x 100mm
Data Input - PC Software / Android App / Console Unit
Communication - Wired / Wireless

Transport Terminal Displays



Terminal Display for Bus Terminal And Railways Stations
Available in Single Colour And Multicolor Format
Centralized Controlled

Transport On-board Displays



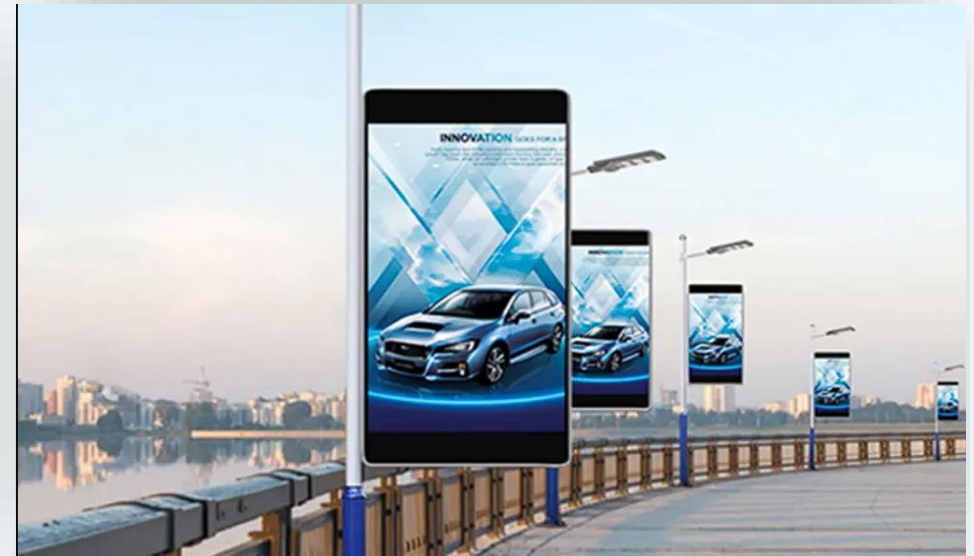
On-board Displays for Bus And Railways. Available in
Front, Side, Rear and In bus Display Format.

Smart City VMD (Variable Message Display)



Smart City VMD Variable Message Display

Street Pole Displays



Smart City Street Pole Displays

OUR INSTALLETIONS



ZF India Pvt. Ltd.



Baichung Bhutia
Stadium Sikkim



Parking LED Display At Abu Dhabi

Expertise In Various Industrial Protocols And Technologies As Follows.

- Compatibility to variety of Industrial Protocols like MODBUS RTU, TCP/IP MODBUS, CAN, SPI, I2C, Profibus, ProfNet, Ethernet IP, ControlNet, S7 protocol, OPC-UA
- Data capturing from Various PC software's and from databases like Oracle, Access, SQL, MONGO DB etc.
- Data capturing from Cloud Server using various IoT protocols such as MQTT, REST APIs, CoAP, WEBHOOK, HTTP, etc.

Expertise In Various Connectivity And Interfaces As Follows.

- Various Wired Connectivity options like Ethernet (LAN), RS 485, RS 232, Analog Inputs like 4-20mA Current Loop and 0-10 V etc.
- Various Wireless Connectivity options like WIFI, GPRS, LoRa, BLE, NB-IoT etc.
- Data Capturing capability from various Special Purpose Machines like FANUC, ARBURG etc.
- Data capturing Capability from All brand of PLCs like Siemens, Rockwell/ Allen Bradley, Delta, Mitsubishi etc.

We Have Expertise In Various Technologies And Domains As Follows.

- Work experience in various technologies like RFID, Barcode, Bluetooth & BLE, GSM &
- PCB Layout design for single layer and multilayer PCBs.
- Data Capturing capability from various Special Purpose Machines like FANUC, ARBURG etc.
- Data capturing Capability from All brand of PLCs like Siemens, Rockwell/ Allen Bradley, Delta, Mitsubishi etc.

IoT Enabled Ambient Temperature Monitoring

- Monitoring of ambient parameters like temperature, humidity is important aspects for various businesses such as Data Centers, Cold Storages, Pharmaceutical Labs, Chiller Rooms, Green Houses, Poly Houses etc.
- We have launched IoT Enabled Temperature and Humidity Monitors along with messaging Alerts over SMS and Emails.

Features

- Continuous Wireless Remote Monitoring
- Dashboard For Remote Monitoring
- Multiple Sensors Can Be Connected To Master Controller
- Alert Messaging For Threshold Crossing By Emails And SMS
- Variety Of Connectivity Options For Internet Connectivity
- Local Storage Of Data At Master Controller In Case Of No Network
- Audio Indication At Local Monitor In Case Of Threshold Levels Crossed
- Data Recording Along With Report Generation For Further Analysis

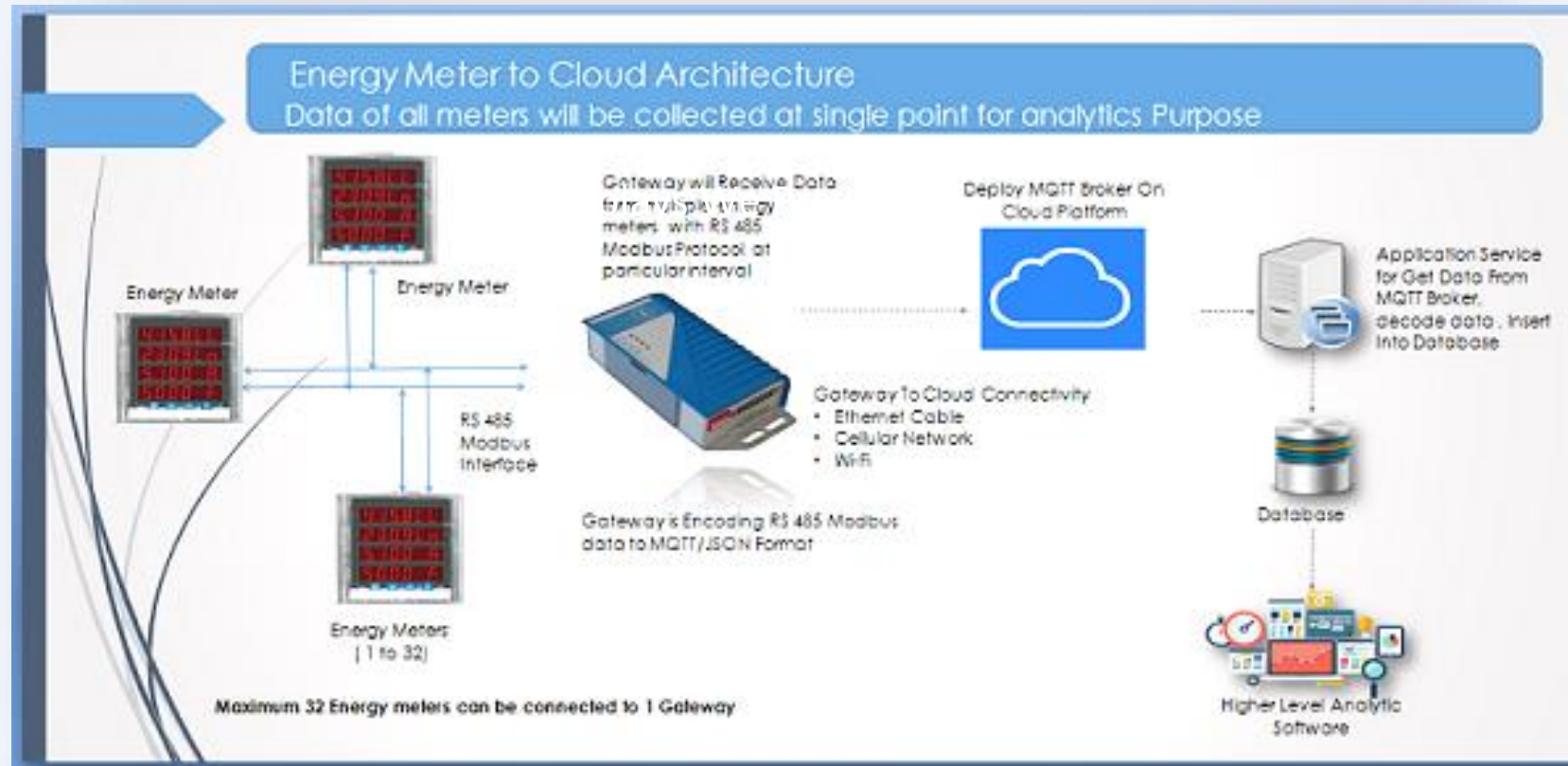


Application

- Data Centre
- Cold Storage
- Health Care
- Process Industries
- Telecom
- Agriculture

Smart Energy Monitoring

- Energy Monitoring is important aspect for all business houses. Energy consumption taking place in factory at various locations need to be measured. This becomes very crucial to keep energy consumption well within MD (Maximum Demand) crossing limits.
- We at Vertaxis have developed smart Energy Monitoring solution, for Live monitoring of energy consumption taking place at your plant.



We Provide Solutions And Services In Various Domains As

- Embedded Products Development
- IoT Enabled Ambient Temperature Monitoring
- Smart Energy Monitoring
- Asset Tracking using RFID
- RTLS (Real-time Location System)



India's Leading Industrial Led Display Manufacturer.

THANK YOU

LOOKING FORWARD TO WORK WITH YOU.

YOU CAN REACH US AT

Shed No-A1 , Chavan Industrial Estate, Near Nalanda School, Dhayari, Pune 411041
Contact: +91 7414954625 / +91 7219065459

Email: sales.vertaxis@gmail.com / sales@vertaxis.in

